

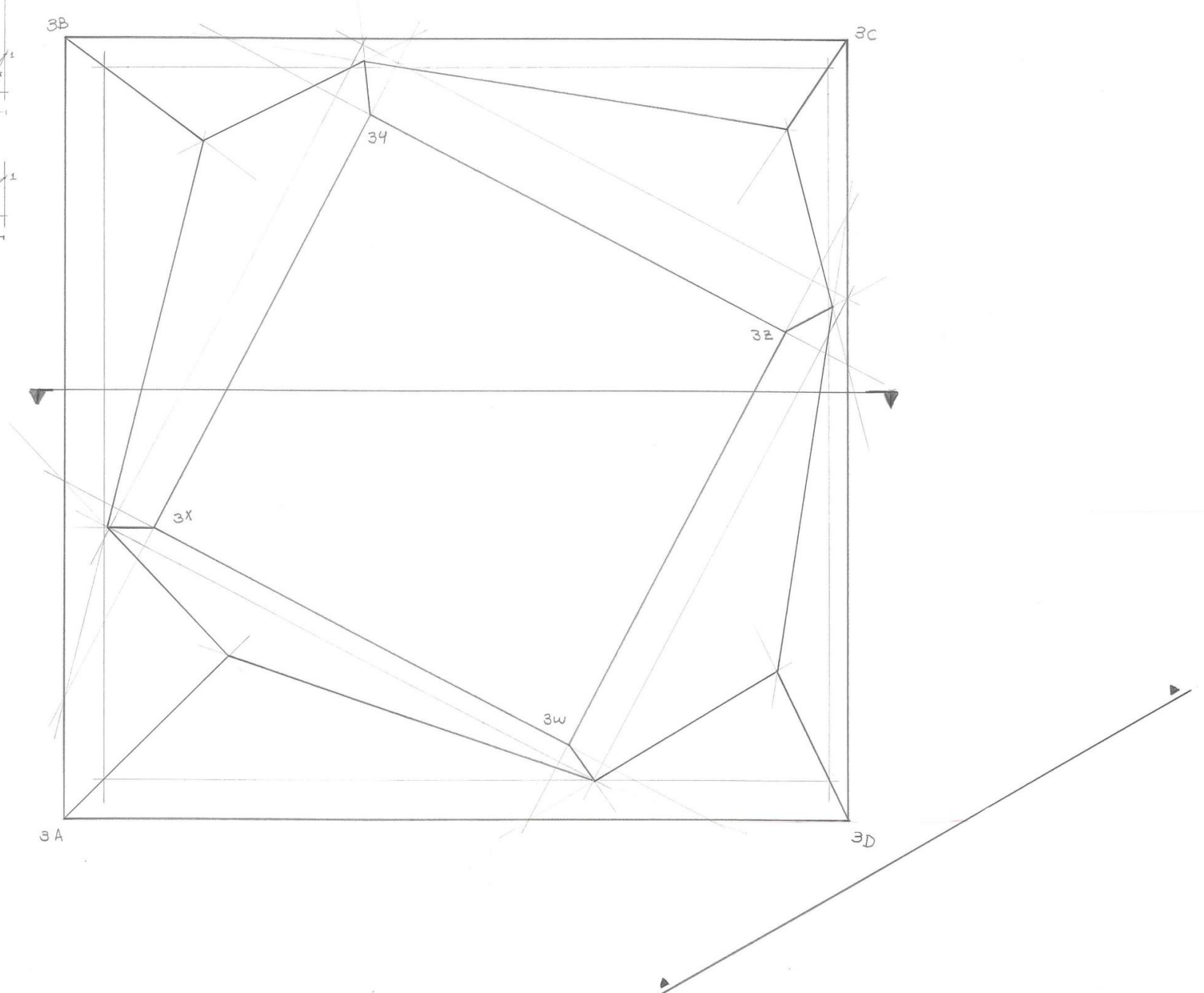
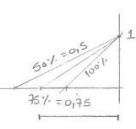
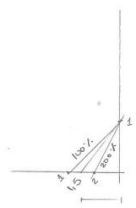
1 unidade Altimétrica = 1 m

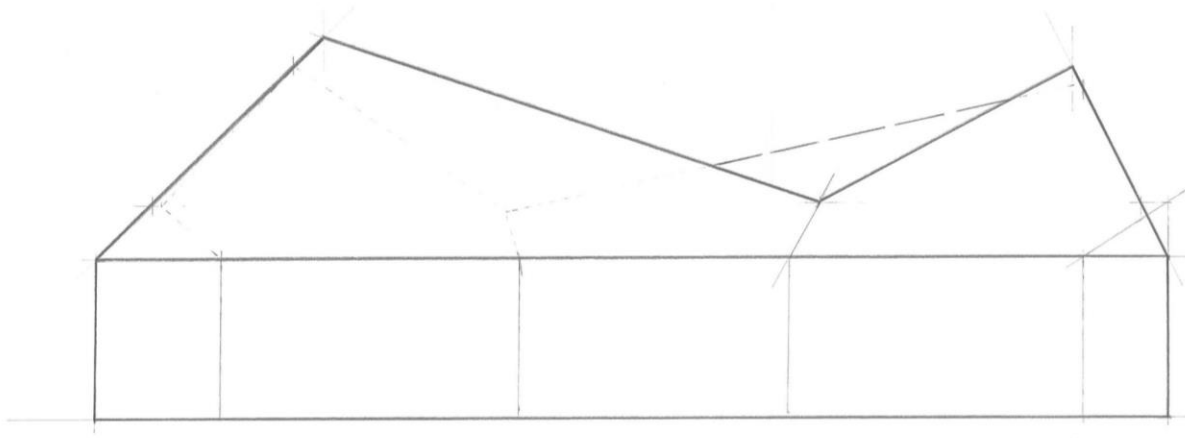


escala 1:100

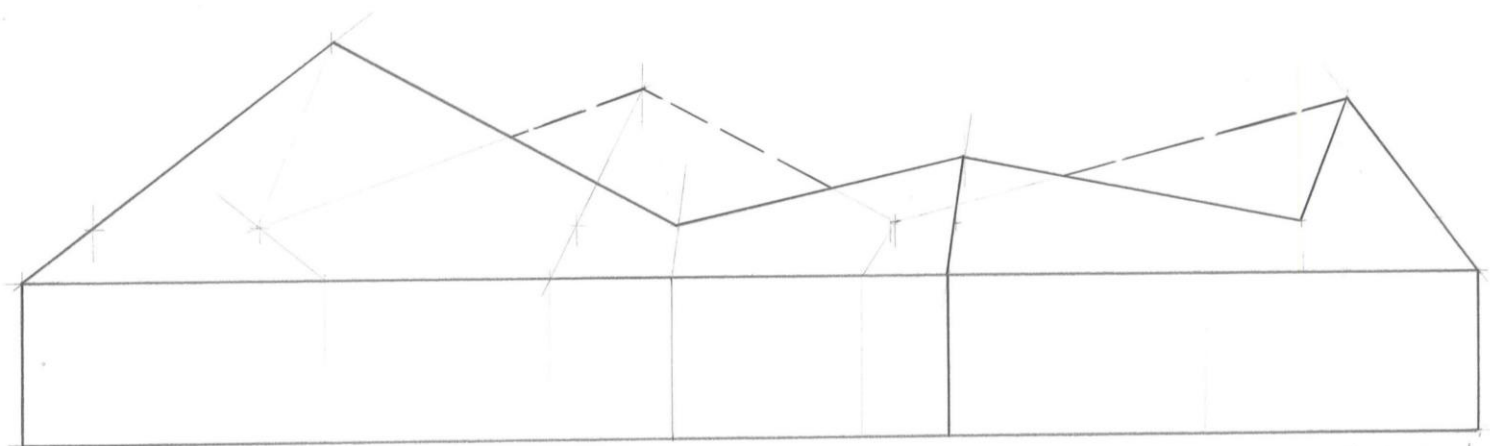


declives	intervalo
AB - 100%	Intervalo 1
BC - 1,5	Intervalo 1
CD - 200%	Intervalo 1
DA - 1	Intervalo 1
WX - 2	Intervalo 1
X4 - 45°	Intervalo 1
YZ - 0,75	Intervalo 1
ZW - 1	Intervalo 1

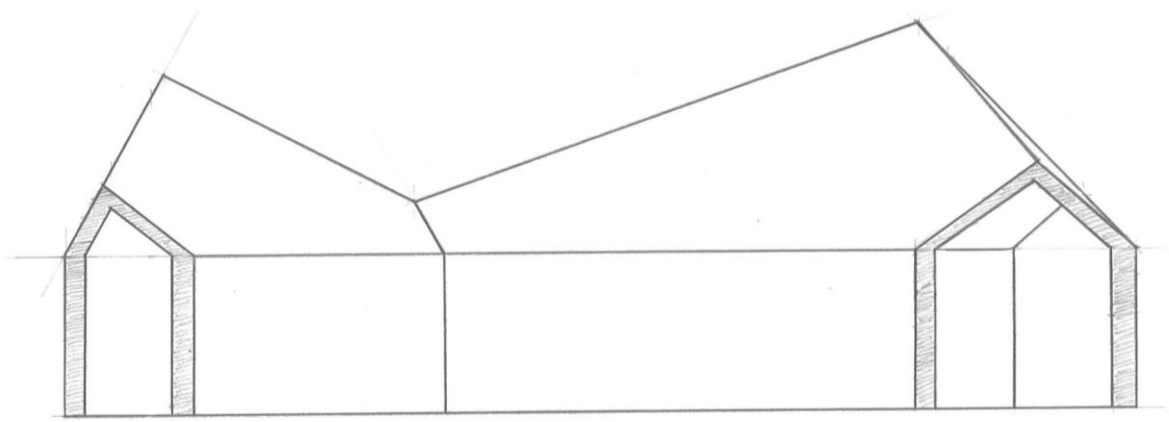




Alçado Sul



Alçado Sudeste  
30°/60°



corte vertical

